

Corporate Presentation

Sample Work – YTD 2018



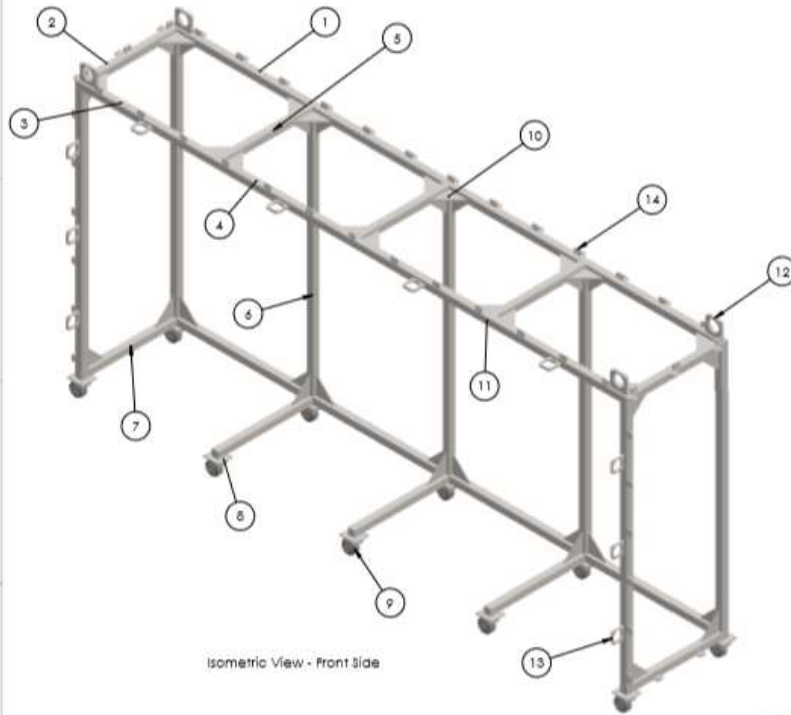
Company Introduction

MechaFab Industries, based in Houston, Texas is committed to help your Company grow, and succeed by supporting your engineering and manufacturing operations, and producing your most complex components.

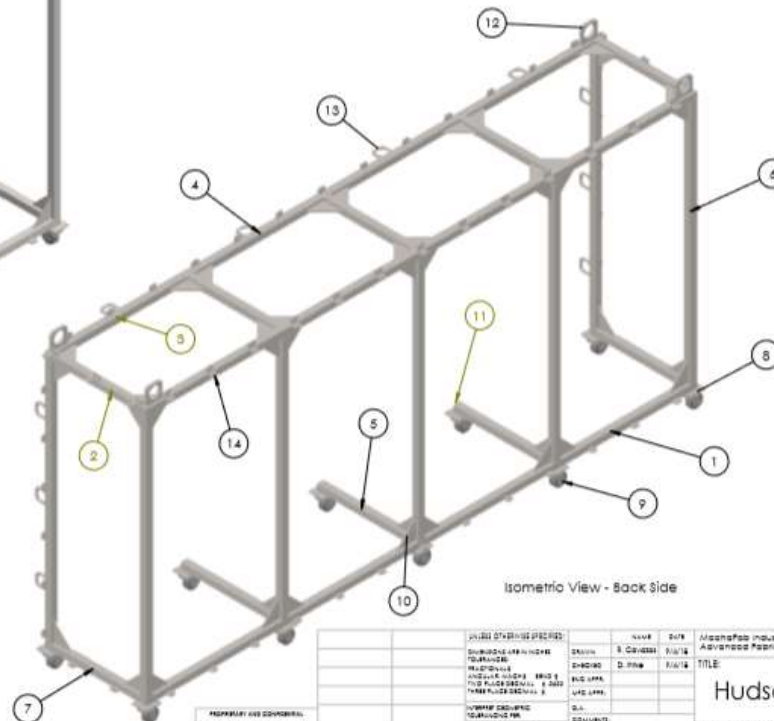
MechaFab Industries, specializes in the Engineering, Design, and Manufacturing of custom made tooling, fixtures, machines, or tools to enhance your Production or Assembly capabilities. We offer precision CNC machining, fabrication, and welding services.



Sample Work - Engineering & Design



ITEM NO.	DESCRIPTION	QTY.
1	2-1/2" x 3/16" Sq. Tube x 208.8" Long	2
2	2-1/2" x 3/16" Sq. Tube x 38.5" Long	2
3	2-1/2" x 3/16" Sq. Tube x 51.63" Long	2
4	2-1/2" x 3/16" Sq. Tube x 49.13" Long	2
5	2-1/2" x 3/16" Sq. Tube x 35.94" Long	6
6	2-1/2" x 3/16" Sq. Tube x 92.63" Long	7
7	2-1/2" x 3/16" Sq. Tube x 38.44" Long	2
8	3/8" Plate, 5.8" x 6" - Caster Mounting	10
9	5" Caster with Brake - McMaster P.N. 30275T21 & 2703T32	10
10	3/8" Plate, 7" x 7" - Gusset	46
11	1/4 Ga. Plate, 2-3/8" x 2-3/8" - Sq. Tube Covers	8
12	1" Plate, 6" x 6" - Lifting Padeye	4
13	.75" Plate, 4.5" x 4.5" - Attachment Padeye	10
14	.5" Plate, 1.75" x 2.25" - Fabric Padeye	80



PROPERTY AND COPYRIGHT:
THIS DRAWING IS THE PROPERTY OF
MECHA-FAB INDUSTRIES. IT IS TO BE
USED FOR THE PROJECT ONLY AND
NOT TO BE REPRODUCED OR
TRANSMITTED IN ANY FORM OR
BY ANY MEANS, ELECTRONIC OR
MECHANICAL, INCLUDING PHOTOCOPYING,
RECORDING, OR BY ANY INFORMATION
STORAGE AND RETRIEVAL SYSTEM.

DESIGNED BY	DATE	APPROVED BY	DATE

NAME	DATE	APPROVED BY	DATE

MECHA-FAB INDUSTRIES
10000 D. HWY. 100
LIVE OAK, TEXAS 75043
TEL: 972-261-1111
WWW.MECHA-FAB.COM

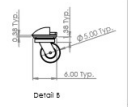
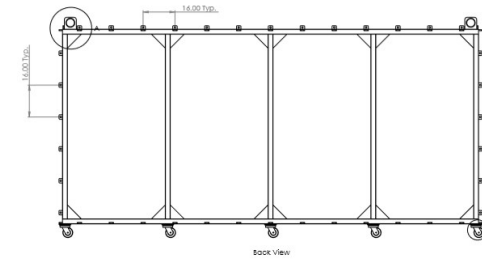
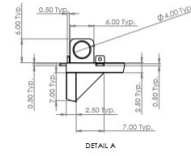
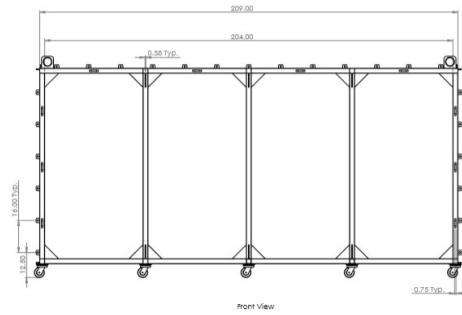
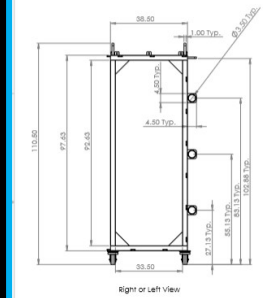
Customer: Carbon Steel
EQUIPMENT

MECHA-FAB INDUSTRIES & Advanced Fabric Technologies
TITLE:
Hudson Shields

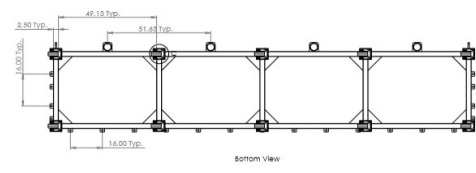
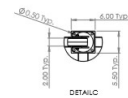
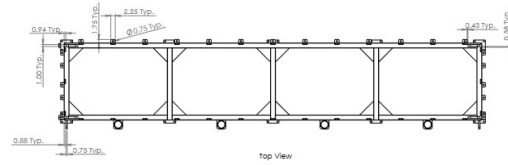
SIZE (DWG. NO.)
C HS-001

SCALE: WEIGHT: 1151 # SHEET 1 OF 4
REV 0

Sample Work - Engineering & Design



REVISIONS	DATE	BY	APP'D



DESIGNER	DATE	SCALE	SHEET NO.	TOTAL SHEETS

PROJECT NO.	
DESCRIPTION	
DATE	
SCALE	
SHEET NO.	
TOTAL SHEETS	

Hudson Shields

SIZE DWG NO. REV

C 100-001 0

SCALE WEIGHT 11.8 1 SHEET OF 4

DESIGNER	DATE	SCALE	SHEET NO.	TOTAL SHEETS

PROJECT NO.	
DESCRIPTION	
DATE	
SCALE	
SHEET NO.	
TOTAL SHEETS	

Hudson Shields

SIZE DWG NO. REV

C 100-001 0

SCALE WEIGHT 11.8 1 SHEET OF 4

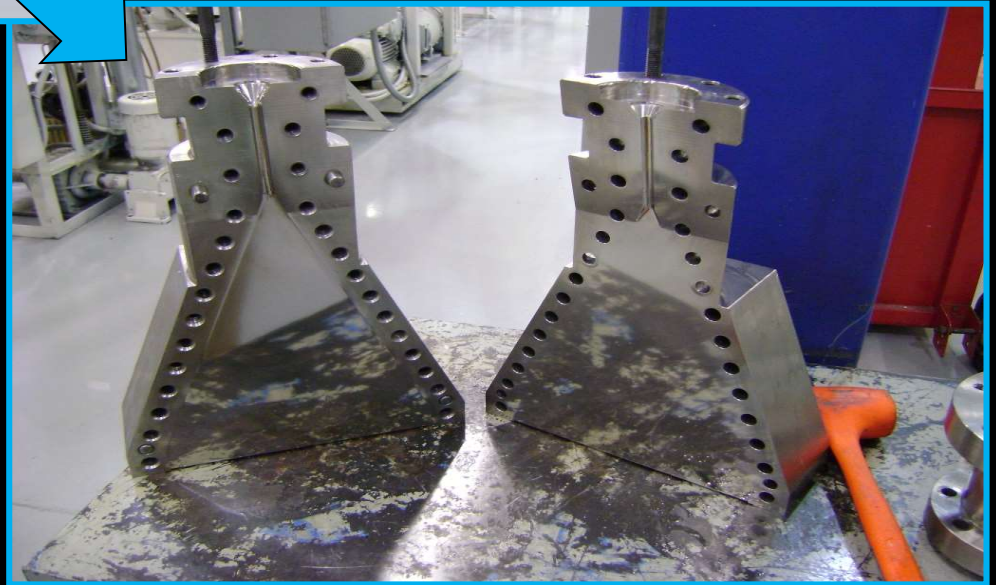
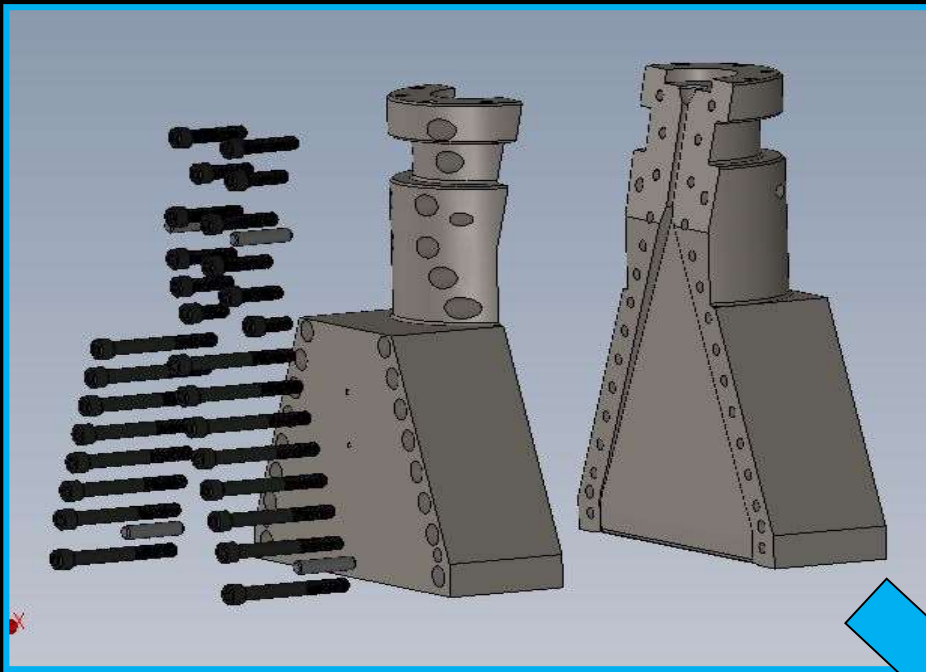
Sample Work - From Design to Reality



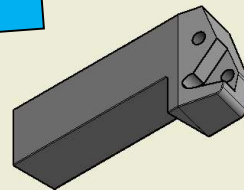
Sample Work - From Design to Reality



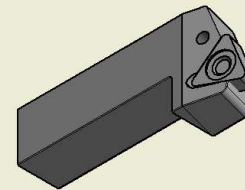
Sample Work – Engineering & Design



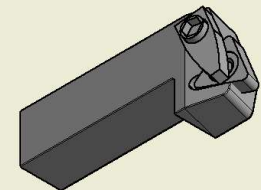
Sample Work – Engineering & Design



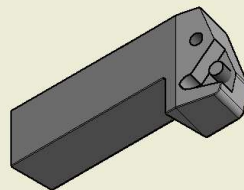
1. Tool Shank Modified



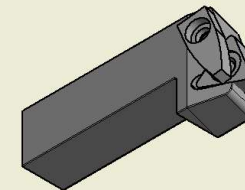
3. Place TNMG 666 Insert



5. Tighten/Torque Insert Holder with Cap Screw



2. Add Stud Insert Alignment (Leave Permanently)



4. Position Custom Made Insert Holder

6. Reverse Steps 3 - 5 to Remove the Insert

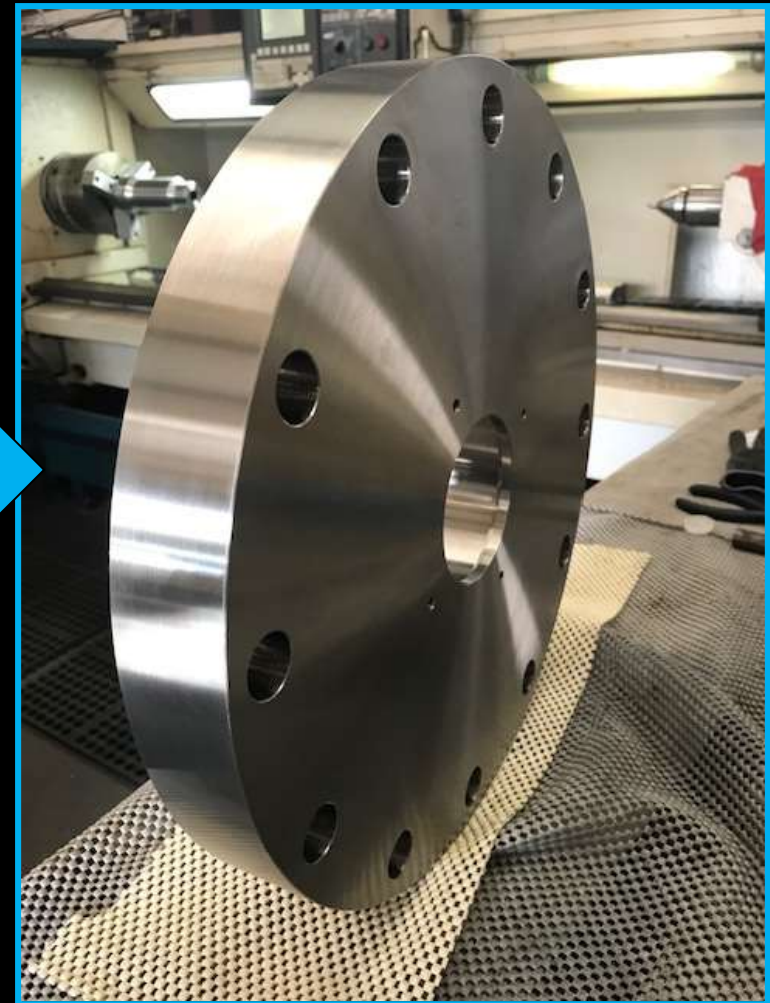
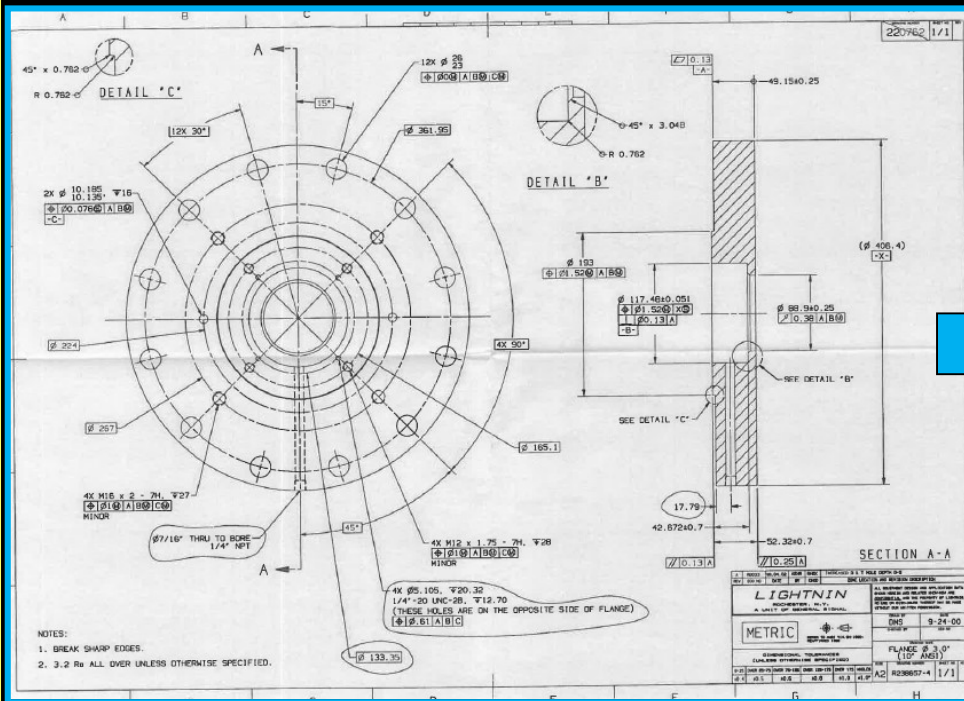
7. Perform Steps 3 - 5 to Add a New Insert

Rev	Issued	By	Date
01			
02			
03			
04			
05			
06			
07			
08			
09			
10			
11			
12			
13			
14			
15			
16			
17			
18			
19			
20			

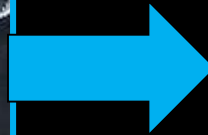
Sample Work – CNC Machining



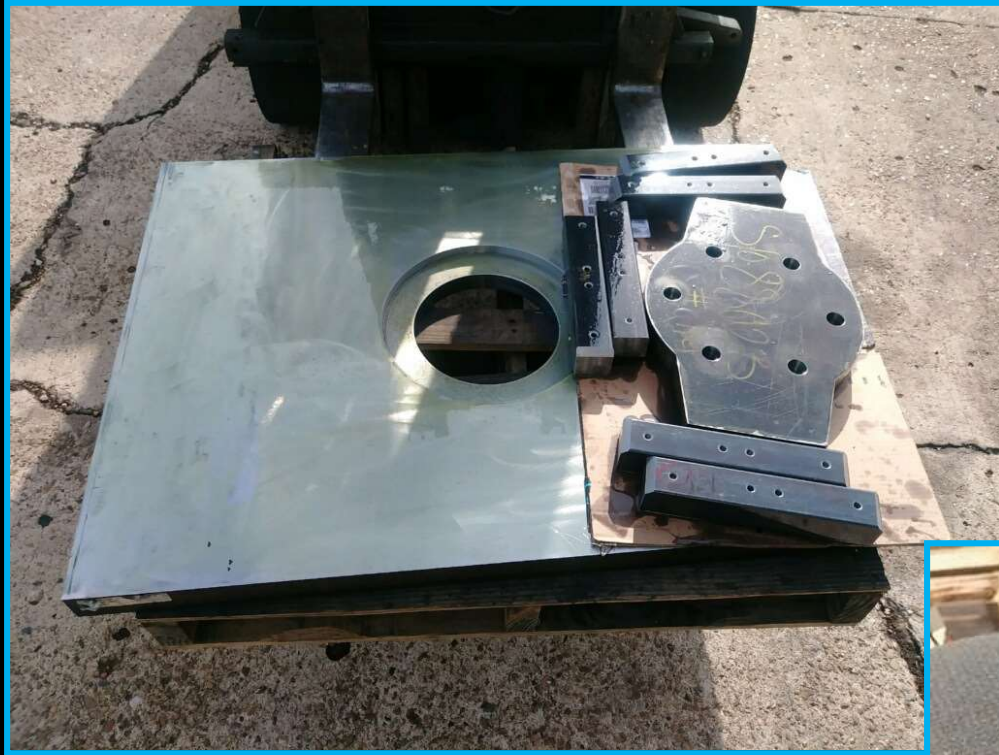
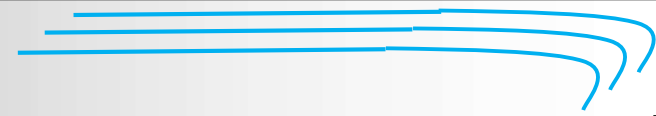
Sample Work – CNC Machining



Sample Work – CNC Machining



Sample Work – CNC Machining



Sample Work – CNC Machining



Sample Work – CNC Machining



Sample Work – CNC Machining



Sample Work – CNC Machining



Sample Work – CNC Machining



Sample Work – CNC Machining



Sample Work – CNC Machining



Sample Work – CNC Machining



Sample Work – Fabrication & Welding



Sample Work – Fabrication & Welding



Sample Work – Fabrication & Welding



The End



Thank you